

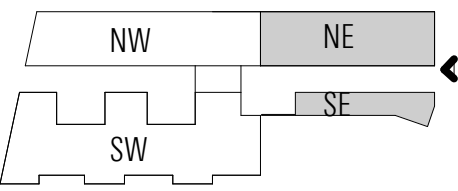
SHEET NO. 06/02/2016

SHEET REVISED 06/02/2016



Notes:

1. Refer to floor plans for overall building dimensions.
2. Refer to sections for overall building height.
3. The exterior elevations, including door and window sizes and locations, the interior partition locations, the number, size, and locations of residential units, outdoor space, stairs, balcony and elevators are preliminary and shown for illustrative purposes only. The parking space layout is shown for illustrative purposes only. The final layouts may vary.
4. Retail storefronts and signage are for illustrative purposes only and are subject to tenant modification. Applicant requests the flexibility to vary the final selection of the exterior materials within the color ranges and material types (maintaining the same general level of quality) proposed, based on availability at the time of construction and further project design.



HARRY THOMAS WAY STREET ELEVATION

A3.11 | PRE-HEARING SUBMISSION
02 / 05 / 2016

ECKINGTON YARDS | EAST + WEST
1611-1625 ECKINGTON PLACE + 1500 HARRY THOMAS WAY, NE WASHINGTON DC 20002

BOUNDARY COMPANIES + J B G
4445 WILLARD AVENUE, SUITE 400 BETHESDA MD 20815

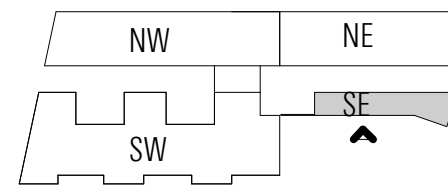
ZONING COMMISSION
District of Columbia
CASE NO. 2016-0011
EXHIBIT NO. 45A1
ERIC COLBERT & ASSOCIATES, P.C.
717 5TH STREET, NW WASHINGTON, DC 20001



SHEET REVISED 06/02/2016

Notes:

1. Refer to floor plans for overall building dimensions.
2. Refer to sections for overall building height.
3. The exterior elevations, including door and window sizes and locations, the interior partition locations, the number, size, and locations of residential units, outdoor space, stairs, balcony and elevators are preliminary and shown for illustrative purposes only. The parking space layout is shown for illustrative purposes only. The final layouts may vary.
4. Retail storefronts and signage are for illustrative purposes only and are subject to tenant modification. Applicant requests the flexibility to vary the final selection of the exterior materials within the color ranges and material types (maintaining the same general level of quality) proposed, based on availability at the time of construction and further project design.



SE | SOUTH ELEVATION

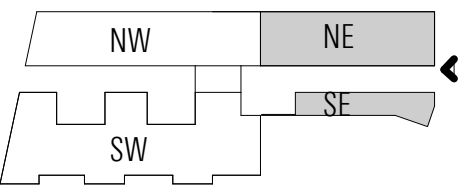
SHEET REVISION 06/02/2016

SHEET REVISION 06/02/2016



Notes:

1. Refer to floor plans for overall building dimensions.
2. Refer to sections for overall building height.
3. The exterior elevations, including door and window sizes and locations, the interior partition locations, the number, size, and locations of residential units, outdoor space, stairs, balcony and elevators are preliminary and shown for illustrative purposes only. The parking space layout is shown for illustrative purposes only. The final layouts may vary.
4. Retail storefronts and signage are for illustrative purposes only and are subject to tenant modification. Applicant requests the flexibility to vary the final selection of the exterior materials within the color ranges and material types (maintaining the same general level of quality) proposed, based on availability at the time of construction and further project design.



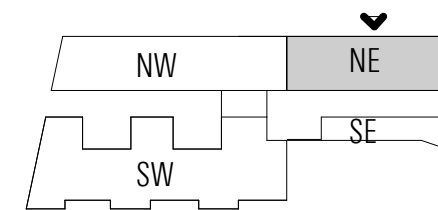
HARRY THOMAS WAY STREET ELEVATION



SHEET REVISED 06/02/2016

Notes:

1. Refer to floor plans for overall building dimensions.
2. Refer to sections for overall building height.
3. The exterior elevations, including door and window sizes and locations, the interior partition locations, the number, size, and locations of residential units, outdoor space, stairs, balcony and elevators are preliminary and shown for illustrative purposes only. The parking space layout is shown for illustrative purposes only. The final layouts may vary.
4. Retail storefronts and signage are for illustrative purposes only and are subject to tenant modification. Applicant requests the flexibility to vary the final selection of the exterior materials within the color ranges and material types (maintaining the same general level of quality) proposed, based on availability at the time of construction and further project design.



NE | NORTH ELEVATION

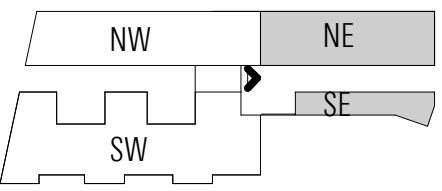
SHEET
6/02/2016

SHEET REVISED 06/02/2016



Notes:

1. Refer to floor plans for overall building dimensions.
2. Refer to sections for overall building height.
3. The exterior elevations, including door and window sizes and locations, the interior partition locations, the number, size, and locations of residential units, outdoor space, stairs, balcony and elevators are preliminary and shown for illustrative purposes only. The parking space layout is shown for illustrative purposes only. The final layouts may vary.
4. Retail storefronts and signage are for illustrative purposes only and are subject to tenant modification. Applicant requests the flexibility to vary the final selection of the exterior materials within the color ranges and material types (maintaining the same general level of quality) proposed, based on availability at the time of construction and further project design.

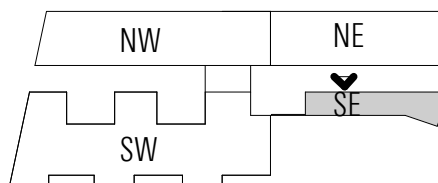


NE + SE | WEST ELEVATION



Notes:

1. Refer to floor plans for overall building dimensions.
2. Refer to sections for overall building height.
3. The exterior elevations, including door and window sizes and locations, the interior partition locations, the number, size, and locations of residential units, outdoor space, stairs, balcony and elevators are preliminary and shown for illustrative purposes only. The parking space layout is shown for illustrative purposes only. The final layouts may vary.
4. Retail storefronts and signage are for illustrative purposes only and are subject to tenant modification. Applicant requests the flexibility to vary the final selection of the exterior materials within the color ranges and material types (maintaining the same general level of quality) proposed, based on availability at the time of construction and further project design.



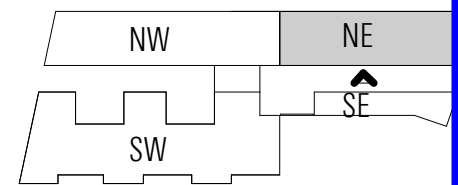
SE | NORTH ELEVATION (PROMENADE)



SHEET REVISED 06/02/2016

Notes:

1. Refer to floor plans for overall building dimensions.
2. Refer to sections for overall building height.
3. The exterior elevations, including door and window sizes and locations, the interior partition locations, the number, size, and locations of residential units, outdoor space, stairs, balcony and elevators are preliminary and shown for illustrative purposes only. The parking space layout is shown for illustrative purposes only. The final layouts may vary.
4. Retail storefronts and signage are for illustrative purposes only and are subject to tenant modification. Applicant requests the flexibility to vary the final selection of the exterior materials within the color ranges and material types (maintaining the same general level of quality) proposed, based on availability at the time of construction and further project design.

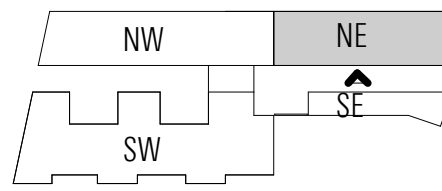


NE | SOUTH ELEVATION (PROMENADE)



Notes:

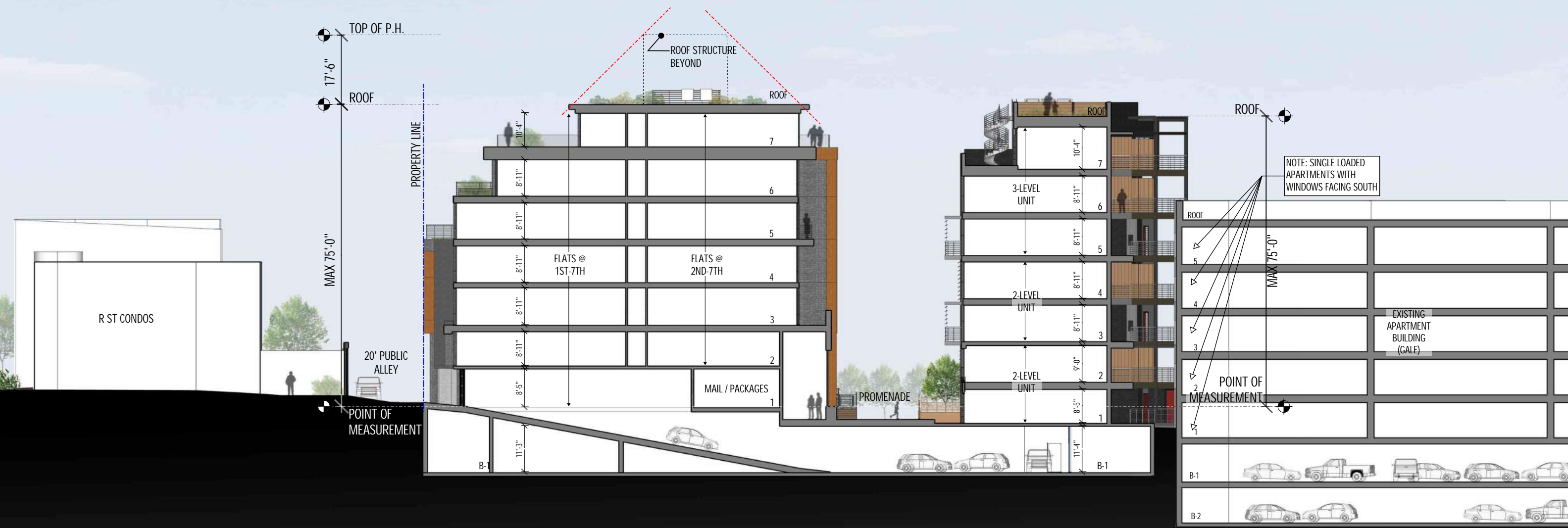
1. Refer to floor plans for overall building dimensions.
2. Refer to sections for overall building height.
3. The exterior elevations, including door and window sizes and locations, the interior partition locations, the number, size, and locations of residential units, outdoor space, stairs, balcony and elevators are preliminary and shown for illustrative purposes only. The parking space layout is shown for illustrative purposes only. The final layouts may vary.
4. Retail storefronts and signage are for illustrative purposes only and are subject to tenant modification. Applicant requests the flexibility to vary the final selection of the exterior materials within the color ranges and material types (maintaining the same general level of quality) proposed, based on availability at the time of construction and further project design.



NE | SOUTH ELEVATION (PROMENADE)

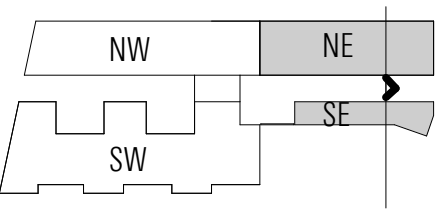
SHEET REVISED 06/02/2016

SHEET REVISED 06/02/2016

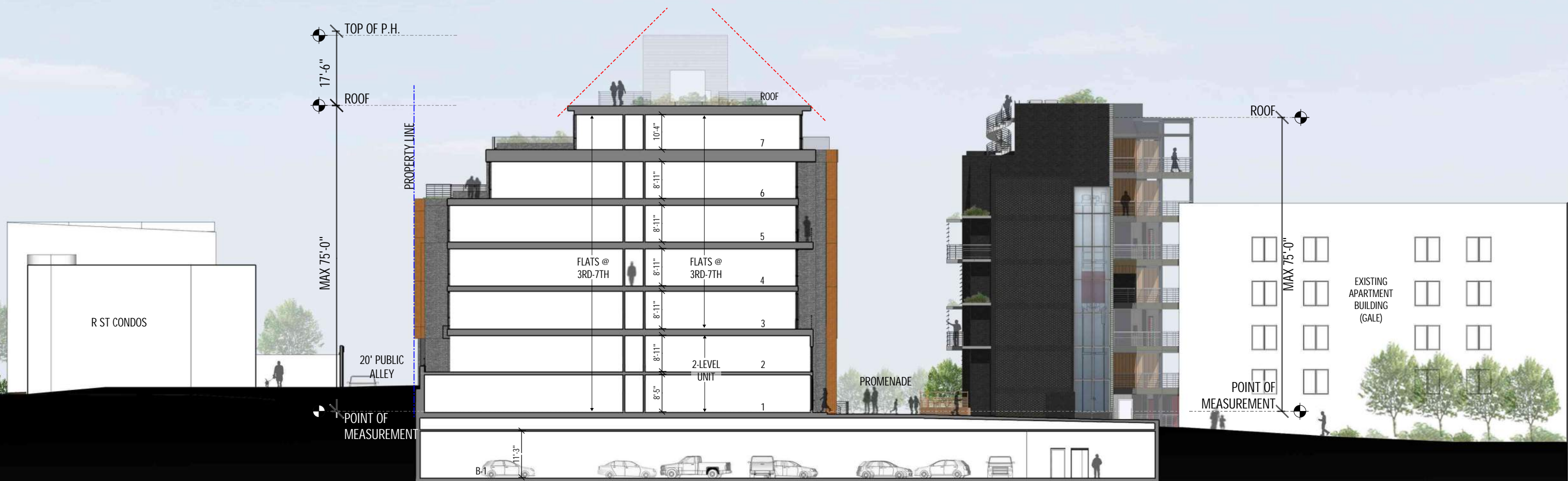


Notes:

1. Refer to floor plans for overall building dimensions.
2. Refer to sections for overall building height.
3. The exterior elevations, including door and window sizes and locations, the interior partition locations, the number, size, and locations of residential units, outdoor space, stairs, balcony and elevators are preliminary and shown for illustrative purposes only. The parking space layout is shown for illustrative purposes only. The final layouts may vary.
4. Retail storefronts and signage are for illustrative purposes only and are subject to tenant modification. Applicant requests the flexibility to vary the final selection of the exterior materials within the color ranges and material types (maintaining the same general level of quality) proposed, based on availability at the time of construction and further project design.

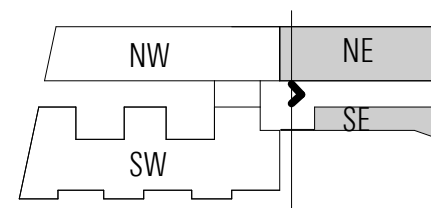


NE + SE | SECTION FACING EAST



Notes:

1. Refer to floor plans for overall building dimensions.
2. Refer to sections for overall building height.
3. The exterior elevations, including door and window sizes and locations, the interior partition locations, the number, size, and locations of residential units, outdoor space, stairs, balcony and elevators are preliminary and shown for illustrative purposes only. The parking space layout is shown for illustrative purposes only. The final layouts may vary.
4. Retail storefronts and signage are for illustrative purposes only and are subject to tenant modification. Applicant requests the flexibility to vary the final selection of the exterior materials within the color ranges and material types (maintaining the same general level of quality) proposed, based on availability at the time of construction and further project design.



NE + SE | SECTION FACING EAST